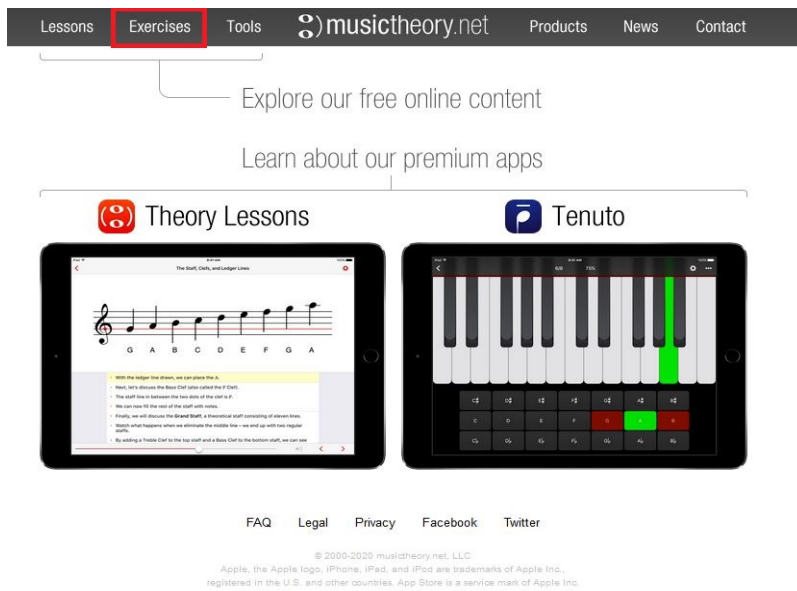
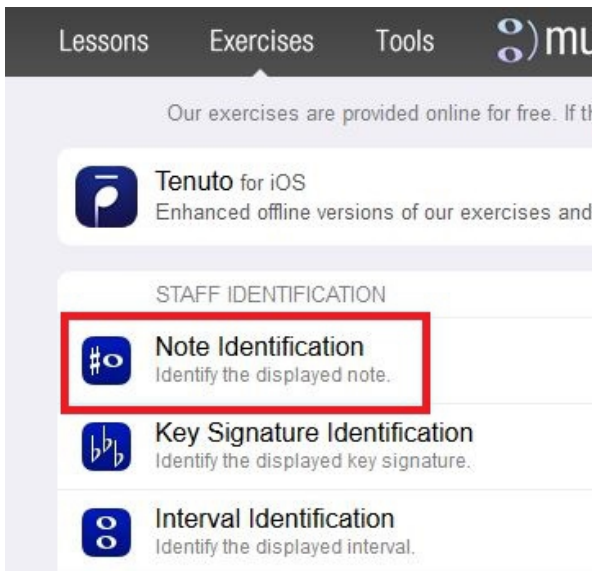


MusicTheory.Net – Setting up the Note Identification exercise

Go to the home page at www.musictheory.net, and click on the 'Exercises' tab.

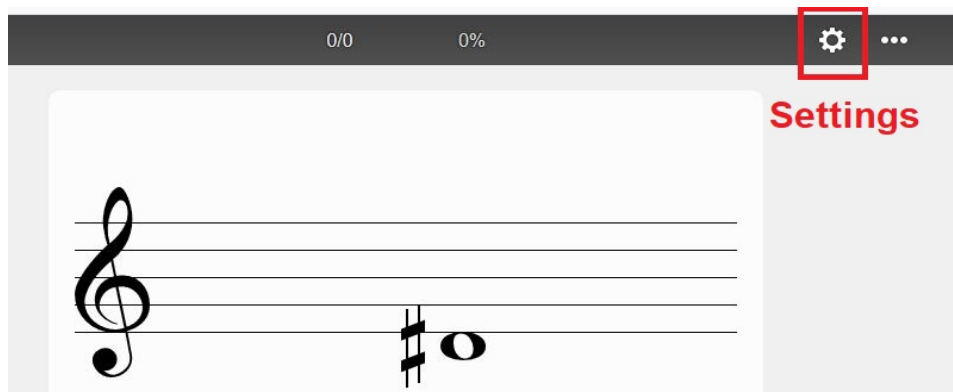


Click on 'Note Identification'

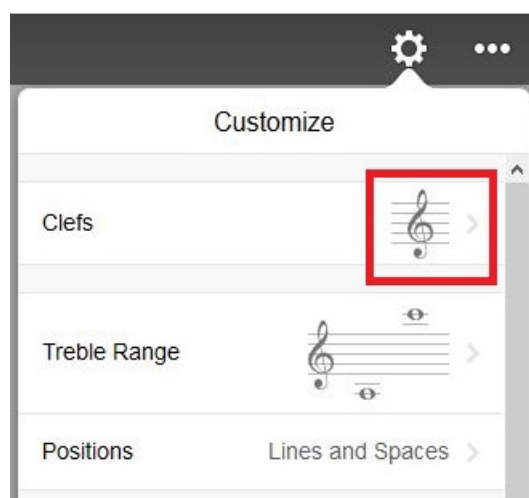


This opens up the Note Identification exercise.

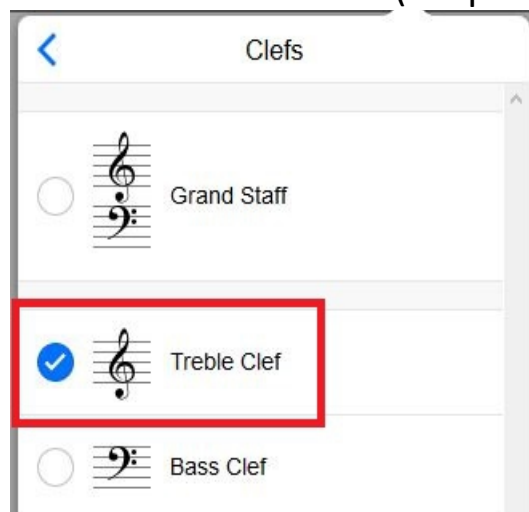
Click on the Settings button.



Click on the menu, and choose Clefs.



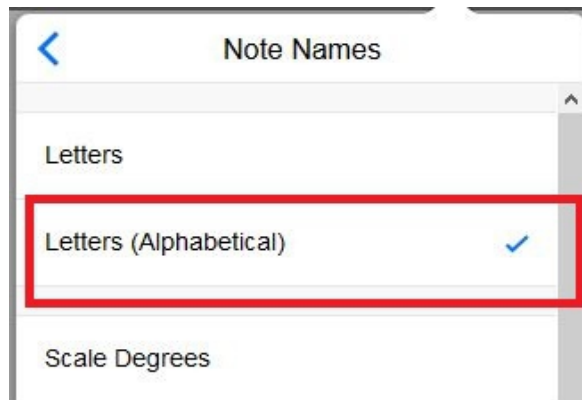
Choose the treble clef. (It's probably already checked.)



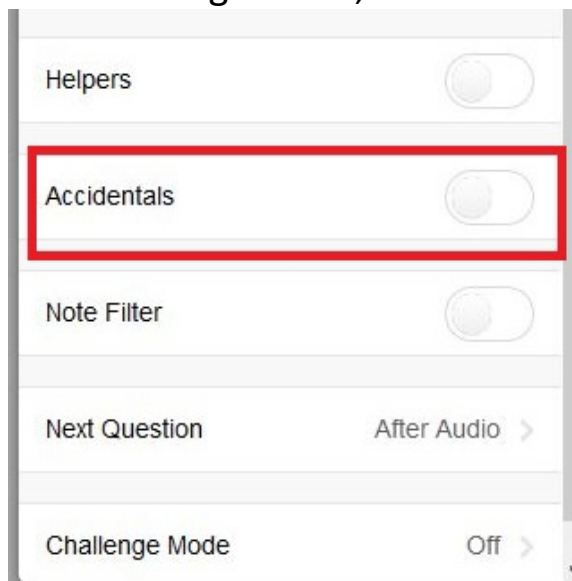
Click on the Key Signatures tab, and choose the Natural symbol, at the top. (It's probably already checked.)



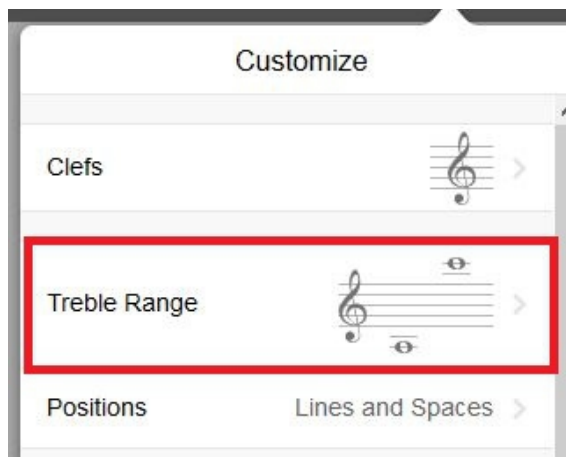
Click on Note Names, and choose Letters (Alphabetical). (It's probably already checked.)



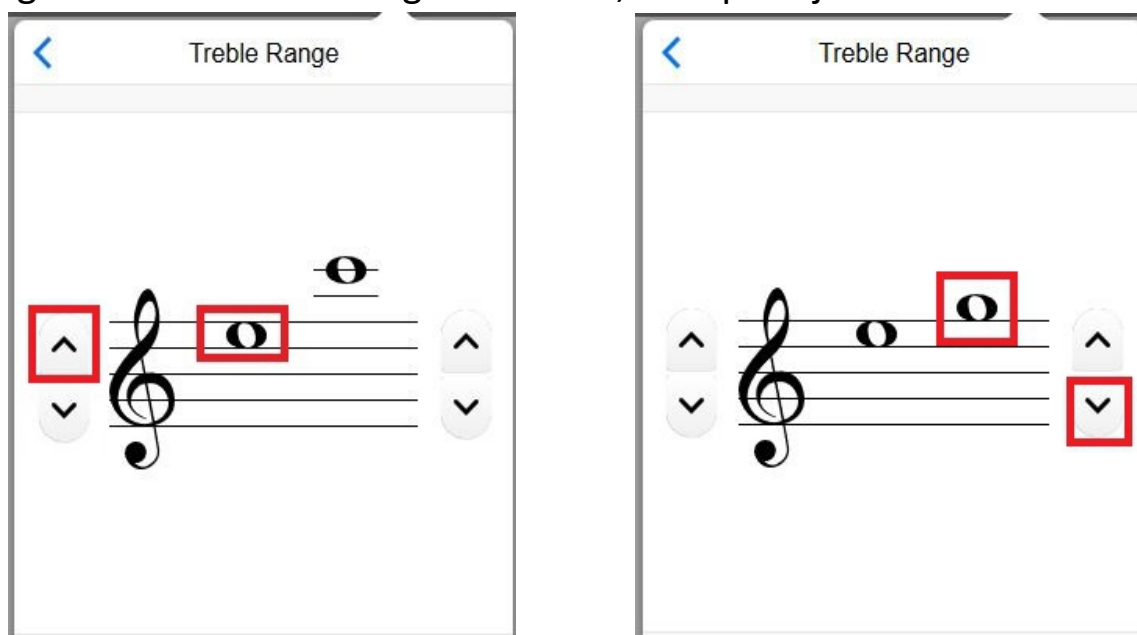
In the Settings menu, set Accidentals to 'Off'



In the Settings menu, click on 'Treble Range'



Use the left arrow to set the low note to E, the top space on the clef. Use the right arrow to set the high note to G, the space just above the clef.



This give you a choice of only three notes: E, F or G. When you can easily identify these three notes on the staff, then add the next lower line, D. This gives you a range of only four notes. When you're ready to add another note, move the lower note down to the next space, C. Keep adding notes until you can read all of the notes on the staff.